

MONTHLY MEMBERSHIP PROGRESS REPORT

District 14 D

Results as of: 1/31/2024

GMT:

LOCATION PENNSYLVANIA

GMT CA

Clubs			
RESULTS FOR 2023-2024			
QUARTER	NEW CLUB GOAL	NEW CLUBS	DROPPED CLUBS
JULY/AUG/SEPT	0	0	0
OCT/NOV/DEC	1	0	0
JAN/FEB/MAR	0	0	0
APR/MAY/JUNE	0	0	0

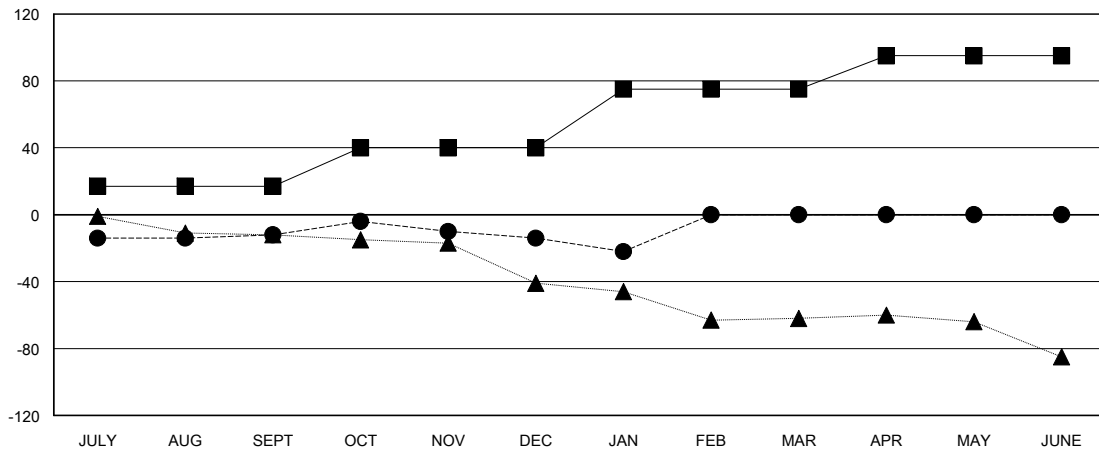
Members			
RESULTS FOR 2023-2024			
QUARTER	MEMBER GROWTH NET GOAL	MEMBER GROWTH ACTUAL	DROPPED MEMBERS ACTUAL (including transfers)
JULY/AUG/SEPT	17	23	31
OCT/NOV/DEC	23	20	19
JAN/FEB/MAR	35	2	10
APR/MAY/JUNE	20	0	0

GOALS AND ACTUAL NEW CLUBS CUMULATIVE



- - CURRENT YEAR GOALS FOR NEW CLUBS
- - CURRENT YEAR ACTUAL NEW CLUBS
- ▲ - LAST YEAR ACTUAL NEW CLUBS

GOALS AND ACTUAL MEMBERS CUMULATIVE



- - MEMBER GROWTH NET GOAL
- - MEMBER GROWTH ACTUAL
- ▲ - LAST YEAR MEMBERSHIP ACTUAL

DROPPED CLUBS: 0	21 CLUBS OF 41 ADDED 1 OR MORE NEW MEMBERS	GENDER DISTRIBUTION MALE 892 (75.91%) FEMALE 283 (24.09%)
DROPPED MEMBERS DECEASED 13 CLUB CANCELLED 0 OTHER 47 TOTAL 60	CLICK HERE FOR CUMULATIVE MEMBERSHIP DATA	TOTAL FAMILY UNIT MEMBERS 212 FAMILY MEMBERS PAYING HALF DUES 110